



FaMa+ TPIS

TECHNICAL AND OPERATIONAL MANAGEMENT OF HOSPITALS AND OTHER HEALTH CARE FACILITIES

Information System **FaMa+ TPIS** is a modular solution for **complex technical and operational support processes in hospitals and other medical facilities.**

Software **FaMa+ TPIS** provides central management of all hospital's real estate and movable property and an effective process control of their administration, operation and safety, with an emphasis on cost reduction. FaMa+ TPIS is supplemented by **mobile applications Device movement on patient** and **Maintenance** to work directly in the field.

Modules to choose from:

Space records	Technical records	Staff records	Construction technical records	Medical device management
Energy management	External relations	Graphical presentation of data	Repeating activities	Billing
Lendings	Inventory management	Scheduling	Helpdesk	Work requests
Documentation	Moving	Transportation	 Mobile application Device movement on patient	 Mobile application Maintenance

SPACE RECORDS

- Coherent management of structural and technical records for space objects in user defined hierarchy.
- A unified methodology and rules for the creation of technical records of area facilities and for the continuous updates of the records.
- Mutual comparison available of technical and economic data for individual space records..

TECHNICAL RECORDS

- Central and up-to-date register of reserved and other technical assets.
- Technical assets can be subdivided into various types, classes, production models, etc.
- Corresponding supplier, producer and service organization data.

STAFF RECORDS

- Detailed management of the register of personnel in employment relations with the organization.
- Possibility to display the location of the employee in the blue prints.
- Records of employment records and documents related to the employee.

CONSTRUCTION TECHNICAL RECORDS

- Detailed registration of construction and technical elements.
- Possibility of the resolution of group and individual building components.
- Registration of information about suppliers and organizations that provide service for construction and structural elements.

MEDICAL DEVICE MANAGEMENT

- Central and up-to-date registry of medical devices.
- An overview of the value of medical devices, depreciation, organizational departments and persons who possess medical devices.

ENERGY MANAGEMENT

- Systematic attitude to monitoring and evaluating of necessary data and information for energy management.
- Efficient division of energy costs consumed by individual cost centers (units or users).

EXTERNAL RELATIONS

- Central electronic ledger of received invoices for administrative, operational and maintenance services.
- Simple allocation of costs to pertaining assets (objects) and their further optimization.

GRAPHICAL PRESENTATION OF DATA

- Central and up-to-date electronic construction drawing documentation (in one data storage, in single entry format).
- Visualization of organization's real estate in space context.

REPEATING ACTIVITIES

- Efficient planning and monitoring of periodic activities and inspections.
- Central storage for inspection reports and check results.

BILLING

- Basis for proposal, approval, execution and control of budget allocation of financial resources.
- Presentation of information regarding actual state of free financial resources for execution of administrative and maintenance processes, etc.

LENDINGS

- Registration of objects (parking cards, smart cards, keys, etc.) and management of lending to employees or to other entities (visitors, external business, etc.)

INVENTORY MANAGEMENT

- Up-to-date information regarding inventory status (level, availability) in individual warehouses.
- Single and unambiguous data basis (inventory catalogues, inventory movements, counting, etc.).
- Simple work with documents including support of creating necessary outputs both in digital and paper format.

SCHEDULING

- Centralized scheduling of operational activities (preventive maintenance, inspections) that repeat in regular intervals.
- The module supports standardization of work done with use of standard job plans.

HELPDESK

- Overview of execution of operational, administrative and maintenance activities.

- Provable basis for quality monitoring and deadline fulfillment of WO.
- Flexible WO process (set given organization's internal processes and valid legislature).

WORK REQUESTS

- Central electronic ledger of all Work Requests.
- Reduction of unapproved purchases of services or purchases from unauthorized suppliers.

DOCUMENTATION

- Central and up-to-date archive of documents in one data area, in single category classification and entry format.
- A highly differentiated user access to relevant documents.
- Exploitation of workflow for document lifecycle management in accordance with its category classification.

MOVING

- Management employee placement and changes in their organizational and spatial inclusion.
- Blueprint moving variant visualization.

TRANSPORTATION

- Complete registration of vehicles in a given organization (including their technical condition).
- Monitoring of the substantive operation of the vehicle (in terms of the monitoring of the utilization of the vehicle, accounting documentation, documents for drivers' salary statements, etc.).

Mobile application DEVICE MOVEMENT ON PATIENT

- Add-on mobile application module to the FaMa+ TPIS system for monitoring of medical devices used/applied to the patient.
- Easy assignment and removal of devices related to the patient (by scanning the device bar code).

Mobile application MAINTENANCE

- Add-on mobile application module for maintenance staff, who need to work with the data directly in the field.
- Easy reporting on carried out maintenance/inspection including photo documentation (e.g. technicians' salary statements, etc.).

Solution benefits:

- ✓ Overview of hospital's assets (the value of the property according to the selected type, the number of areas and its use, the technical equipment owned by hospitals).
- ✓ Overview of medical devices (expenses, regular periodic checks, trained operators, power).
- ✓ Operation and maintenance monitoring in terms of cost (how much is maintenance, operation, where it is possible to save money, etc.).
- ✓ An overview of any special medical supplies and other materials.
- ✓ Fast and reliable requirements handling to ensure the management and operation of the hospital, including requirements for materials and supplies.
- ✓ Overview of Power Consumption (possibilities of savings, outputs and analysis of energy consumption, etc).
- ✓ Access to data through a mobile phone (through additional mobile applications *Device movement on patient* and *Maintenance*).

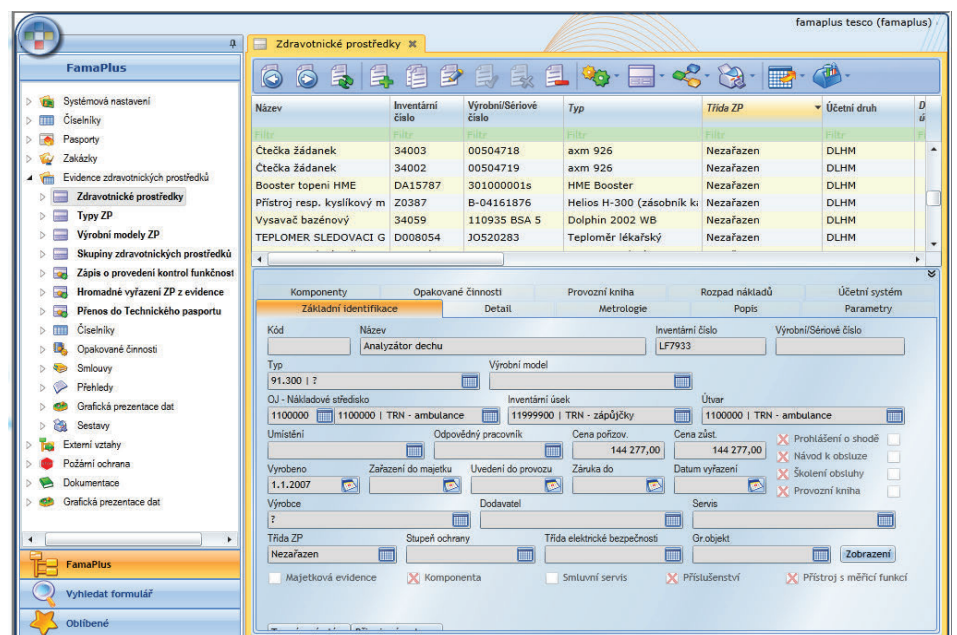
Technology

Architecture of FaMa+ TPIS is designed as three tier, when individual levels are mutually integrated into functional whole:

- **presentation layer:** MS SilverLight
- **database layer:** Oracle or MS SQL Server
- **application layer:** MS .NET

Reference projects

University Hospital Hradec Králové
University Hospital Královské Vinohrady
University Hospital Plzeň
University Hospital Ostrava
St. Ann Hospital Brno
Ostrava Hospital
General University Hospital Prague
Etc.



Software FaMa+ TPIS User Interface - module Medical device management