

Process and data integration through FaMa+ EAI

An integration bus that is able to connect your current systems and to ensure secure data sharing according to your internal processes.

About FaMa+ EAI

FaMa+ EAI is an „Enterprise Service Bus (ESB)“ type product supporting continual building of Enterprise Architecture Integration (EAI) within the organization. The core of the solution is Microsoft BizTalk Server technology.

The product supports internal and external process and data integration of individual systems in organization. It is primarily based on web services and has a wide range of connectors. The solution includes a modern web application interface for easy and user-friendly administration of the entire solution.

Module components



Administration

The Administration is a part of the Integration bus.

As such, it allows the users to enable or disable the ESB application that launches or stops the currently selected ESB. In the case of an application permission, its subordinate services remain stopped.

Administration allows you to enable the application as well as the selected service, and once confirmed, the application is launched including all the selected services. Similarly, you can allow only selected services of the ESB.

A part of Administration is the possibility to inspect and delete communication and operational log records, for which notifications can be set up.

Additionally can be viewed the log records of the ISBR and the processing records of the VFR, which depict the process of synchronization of RTIARE. This can also be invoked manually.



Security audit

The Security audit part of the Integration bus audit enables users to view the currently allocated permissions of the individual information systems to access the integration bus services or the service of ISBR. Users can, in the framework of this new functionality, grant or remove existing permissions for the service of the integration bus or the ISBR.

The section My log access displays the audit records of the currently logged user. Those are taken in the event that the user is viewing log records (ISBR log records, communication log records, operational records) and the respective setting is enabled in the configuration of the integration bus.



Information systems

Information systems, being a part of the module Integration bus, focuses mostly on the area of the information systems themselves and also on certificates and history.

The information systems contain overviews of all the systems which interact with the integration bus. Each system is clearly defined by a unique combination of code and abbreviation or by its name. The selected information system can then have e.g. created or deleted a group in Active Directory.

The function Certificates provides the certificate management for individual information systems. Certificates are used primarily in the context of communication of the information system with the ISBR, when according to the received certificate and code, the attempt to identify the communicating IS with the record in the FaMa+ EAI database takes place. If a matching record is found and there is also the necessary permission on the loaded service of ISBR, the communication is enabled, otherwise the request is rejected.

History allows us to view all systems that have ever been recorded on the side of FaMa+ EAI. Therefore, both currently valid records and already invalid information systems are displayed.



Exchangeable format processing

The RTIARE Exchangeable Format is a part of the Integration bus. As such, it contains the log records recording the processing of the Exchangeable Format files for the RTIARE local copy update.

The functionality provides an overview of all the records that have been created, modified, or removed from the first day of the current month in the daily updates of the local copy of the RTIARE register.



Codelists

The codelists provide lists of entities used throughout the FaMa+ EAI application. These are the codelists of icons, IS categories, icon libraries, type of integration and result type.



Notification

The Notification part of the module Integration bus enables users to view the message queue, define the notification groups, subscriptions and message templates.

The message queue allows users to view the notification messages that have been processed or are waiting to be processed. Such a message can be sent by e-mail or a text message (SMS).

The notification groups are made up of a ring of people, who will be, in case of need, sent a notification message.

The subscription contains information about the type of integration relationship and outcome for which the notification messages should be generated and sent.

In order to correctly send the messages, every subscription has a list of people and notification groups which are to be the addressees of the notification messages.

The notification messages are generated on the basis of message templates.



Service catalogue

The Service catalogue is a part of the Integration bus and offers the functionalities in the areas of services, routing tables, the SOAP actions and history.

The services represent the service catalog itself. In other words, this is a complete list of all the services provided on the side of the integration bus, whether for internal or external integration needs.

The routing table is a table which forms the basis for the implementation of the ISBR service routing requests. The SOAP action is part of the definition of SOAP communication protocol based on XML.



Log records

The Log records are a part of the module Integration bus.

This particular part enable a view of all the log records created during the conversation with the services of the integration bus or, if applicable, with the services of ISBR. The ISBR log records are accessible via the ISBR connector, which is one of the Integration bus components.

It is also possible to consult the operational log records that arise in case of the occurrence of communication or other errors.

Integration

The FaMa+ EAI is an open system, the infrastructure of which includes technology that enables the interconnection of the surrounding systems operated by the customer or in the Internet environment. When supplying the FaMa + EAI, we have acquired a range of experience in the integration of various internal and external systems, including:

Public administration:

- Information system of basic registers
- Information system of data boxes
- National Infrastructure for Electronic Public Procurement (NIPEZ)
- eGovernment Service Bus (eGSB)
- Integrated Information System of the State Treasury (IISSP)

Human resources management:

- Fluxpam
- DTG data center

ERP Systems:

- IS GINIS
- IS SAP R/3
- Helios
- Navision

Banking sector:

- Autobahn FX Rates, Bloomberg FX Rates, FXCM Rates, SIX Rates
- PSD2 banking interface
- Internet banking of the Czech National Bank ABO-K

File Service Management:

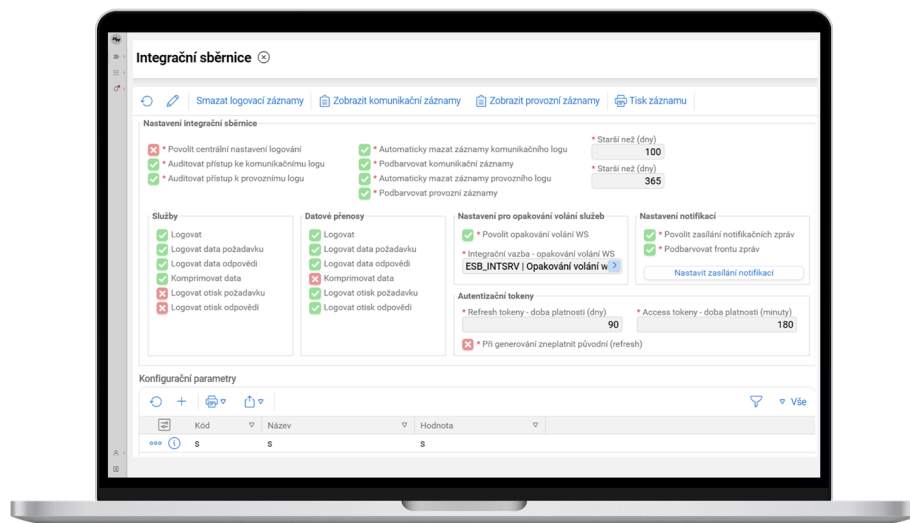
- AIS ATHENA pro evidenci spisové služby
- AIS GINIS

User Account Management:

- Regional Records Information System (KEVIS)
- External electronic portal of local governments (ePUSA)
- Novell Identity Manager
- PUMA Identity management (product of newps.cz)
- Identity management of the Autocont company
- AD (Active Directory)
- MS Exchange

Other information systems:

- Insolvency register (ISIR)
- External information system for registration of insurance claims SATUM
- SFC2014
- Register DE MINIMIS
- CNB exchange rate slip
- ARES
- Team foundation server (TFS)



Solution benefits

Solution including both data (ETL tool) and process integration.

Implement processes for the management of services and resources according to ITIL V3.

High level of integration.

Uniform interface (for both internal and external staff).

Scalability (components can operate in high availability mode or under high utilization).

Technology

FaMa+ EAI is a web application built on HTML5, CSS3, JavaScript and the Microsoft BizTalk Server product.

It is always available in an up-to-date version and can be accessed by the user via a web browser.

Customers

Office for Government

Representation in Property Affairs

Akcenta CZ a.s.

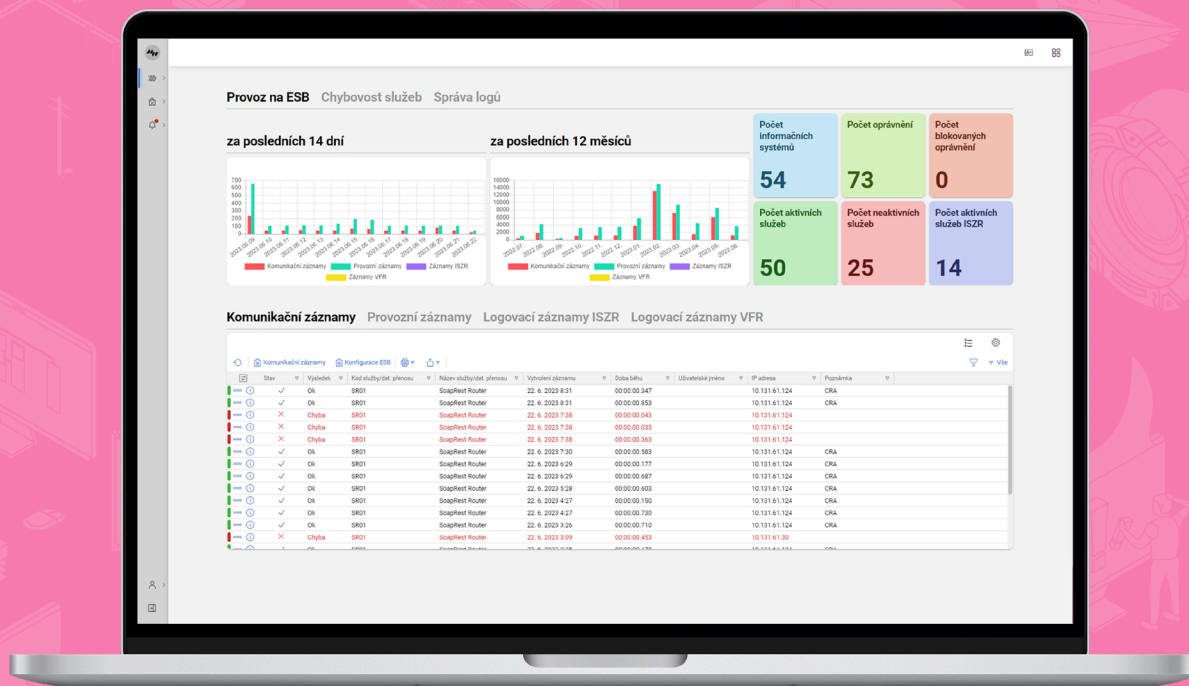
Regional authorities (Olomouc, Karlovy Vary, Zlín, Hradec Králové, Pardubice)

Center for Regional Development of the Czech Republic

Office for the Protection of Personal Data

Ministry for Regional Development

City of Přerov



User interface FaMa+ EAI - Communication records form of the Integration Bus module